

CANCER Care NEWS

When you don't know where to turn, we're only a phone call away.™

VOLUME 17 MAY/JUNE/JULY/AUG 1998

Cancer Care Beneficiary of New York's First Annual REVLON Run/Walk For Women™

Hosted by Bill Cosby, Cindy Crawford, and Halle Berry

Cancer Care is pleased to be named one of the beneficiary charities of New York's First Annual REVLON Run/Walk for Women, organized for the fight against women's cancers. The event will be hosted by entertainment great Bill Cosby and REVLON spokespeople Cindy Crawford and Halle Berry, and will take place on Saturday, May 2nd.



Bill Cosby will host the event.

Created five years ago in Los Angeles through the collaborative efforts of Lilly Tartikoff, Co-Founder of the REVLON/UCLA Women's Cancer Research Program; Ronald O. Perelman, Chairman of the REVLON Group, and The Entertainment Industry Foundation (EIF), the REVLON Run/Walk brings people together in a united effort to eradicate women's cancers. Last year's event in Los Angeles attracted more than 35,000 participants and raised over \$2 million for local women's health programs.

Event chairs of this First Annual New York Run/Walk include Mayor Rudolph Giuliani, Lilly Tartikoff, Ronald Perelman, Janet L. Robinson, President and General Manager of the New York Times, and Suzanne Wright of the Board of Governors of The Entertainment Industry Foundation. Proceeds from the Run/Walk will support

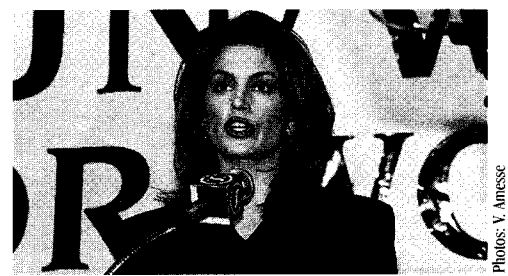


Lilly Tartikoff, Co-Founder of the REVLON/UCLA Women's Cancer Research Program.

the work of young scientists pursuing creative new ideas for battling women's cancers; help provide diagnostic and treatment services for medically underserved women, and fund psychosocial services and financial support for women with cancer and their families, including the work of Cancer Care.

"The REVLON Run/Walk for Women will provide crucial funding for health care, education, and research to combat women's cancers," said Lilly Tartikoff. The entire cost of the REVLON New York Run/Walk is underwritten by event sponsors, allowing 100 percent of the entrance fees and pledges to go directly to research and support programs.

The New York Run/Walk will begin on May 2nd at 8:00 am in Times Square. It will go up Seventh Avenue, into Central Park, and finish in The East Meadow. Opening ceremonies for the event will feature Bill Cosby,



Cindy Crawford will share the spotlight with others including Halle Berry at the opening ceremonies.

Cindy Crawford, Halle Berry, and Mayor Giuliani. A post-event health expo and concert with The Conan O'Brien Show's Max Weinberg Seven and other special guests will conclude the day's activities.

The REVLON Run/Walk event is produced by Rehage Entertainment, Inc. in association with the New York Roadrunners Club and the Entertainment Industry Foundation, which fosters and coordinates the philanthropic efforts and humanitarian spirit of the entire entertainment industry.

If you are interested in running or walking for this event, please call the Event Information number at 212-423-2284, or pick up an entry form at any Duane Reade store in the New York metropolitan area.

Photos: V. Amesse

Cancer Care, Inc.
1180 Avenue of the Americas
New York, NY 10036
(212) 221-3300
(212) 719-0263 (f)

E-mail: info@cancercare.org
Web: www.cancercare.org

Diane Blum, ACSW
Executive Director

The Cancer Care Counseling Line
1-800-813-HOPE (4673)

Services, Support Groups,
Teleconferences and Educational
Program Information/Registration:
(212) 302-2400

Director of National Programs
Ellen Coleman
(212) 221-3300, x. 407

Director of Social Service
Priscilla Hartung
(212) 302-2400, x. 449

Director of Education, Training,
& Teleconferences
Carolyn Messner
(212) 302-2400, x. 464

Director of Development, Community
& Public Relations
Lanie Domm
(212) 221-3300, x. 417

support groups

Cancer Care offers more than 100 support groups each month, where people meet face-to-face to discuss problems, gain support, and learn from others. All of these groups are led by a professional oncology social worker from the staff of Cancer Care. Following is a listing of some of those groups.

Please note: This list is not inclusive. Please call the Cancer Care National Office at 212-302-2400 or the Cancer Care Counseling Line at 1-800-813-HOPE [1-800-813-4673] if you have any questions or would like more information about a particular group.

Group Descriptions

Telephone Support Group: a support group that takes place during a one-hour conference call each week (note: telephone call is free to group members).

Voice-mail Support Group: a telephone support group that takes place via voice-mail messages.

On-Line Support Group: a support group that takes place via computer in message (i.e. "bulletin board") format.

Patients Support Group: a support group for people who now have cancer (any type, at any stage).

Post-Treatment Survivors Support Group: a support group for people who have recently completed cancer treatment (within six months—any type of treatment).

Partners Support Group: a support group for people whose

spouses or partners have cancer (any type, at any stage).

Relatives Support Group: a support group for someone with a family member who has cancer (any type, at any stage).

Caregivers Support Group: a support group for someone who takes care of someone who has cancer (any type, at any stage).

Partners Bereavement Group: a support group for people who have lost a spouse or partner to cancer within the last year.

Relatives Bereavement Group: a support group for people who have lost a family member to cancer within the last year.

"Heart and Soul" Spirituality Group (or) Psychospiritual Group: a support group that focuses on and explores the role of spiritual support for cancer patients/relatives/partners, etc.

Work Re-Entry Group: a support group focused on and exploring work re-entry issues for people with cancer.

Cancer Care Support Groups

Telephone Support Groups (1-800-813-4673)

- Patients Support Group (Tuesdays) Ongoing
- Patients Support Group TBA
- Voice-Mail Patients Support Group TBA
- Work Re-Entry Group (Mondays) Starts April

On-Line Support Groups (http://www.cancercare.org)

- Patients On-Line Support Group (Ongoing: www.cancercare.org)
- Partners/Relatives On-Line Support Group (Ongoing: www.cancercare.org)
- Brain Tumor Patients On-Line Support Group (For information: www.cancercare.org)
- Brain Tumor Family On-Line Support Group (For information: www.cancercare.org)

New York City Office

Daytime Groups

- Patients Support Group for Women (Spanish) (Mondays) Ongoing
- Relatives/Patients Support Group (Spanish) – (1st Monday/Month) Ongoing
- Patients/Relatives Support Group for African-Americans (Mondays) Ongoing
- Partners Bereavement Group (Wednesdays) Ongoing

Evening Groups

- Partners Support Group (Mondays) Ongoing

- Lung Cancer Patients Support Group (Tuesdays) Ongoing
- Bereaved Parents of Young Adults Support Group (Tuesdays) Starts May
- Patients Support Group for Persons 21-40 (Tuesdays) Ongoing
- Bereavement Group for Parents Who Have Lost an Adult Child to Cancer (Tuesdays) Starts April

Westchester County Office

Daytime Groups

- Partners Bereavement Support Group (Alternate Wednesdays) Starts April

Evening Groups

- Relatives Support Group (Alternate Wednesdays) Ongoing

Long Island Offices

Daytime Groups

- Lung Cancer Patients Support Group (Thursdays) Ongoing (Woodbury)
- Prostate Cancer Patients Support Group (Alt. Fridays) Ongoing (Woodbury)

Evening Groups

- Young Adult Patients Support Group (18-40) (Alt. Mondays) Ongoing (Woodbury)
- Colon Cancer Support Group (Mondays) Starts April (Woodbury)

- Breast Cancer Patients Support Group – (1st Tues/Month) Ongoing (Woodbury)
- Prostate Cancer Patients Support Group (Alt. Wednesdays) Ongoing (Woodbury)
- Breast Cancer Patients Support Group (Wednesdays) Ongoing (Ronkonkoma)
- Relatives Support Group (Alt. Mondays) Ends 7/13/98 (Woodbury)
- Partners Bereavement Support Group (Thursdays) Ends 6/25/98 (Woodbury)
- Relatives Bereavement Support Group (Wednesdays) Ends 7/22/98 (Ronkonkoma)

New Jersey Offices

Daytime Groups

- Bone Marrow/Stem Cell Transplant Survivors Support Group (Mondays) Ongoing (Princeton)

Evening Groups

- Post-Treatment Breast Cancer Patients Support Group (1st Monday/month) Ongoing (Millburn)
- Holistic Health Discussion Group (1st Monday/month) Ongoing (Millburn)
- Partners Bereavement Reunion Group (1st Thursday/month) Ongoing (Ridgewood)

Connecticut Office

Daytime Groups

- Women with Gynecological Cancers Support Group (Tuesdays) Ongoing (Norwalk)
- Relatives Support Group (Thursdays) Ongoing (Norwalk)
- Coping with Grief and Loss (Mondays) Ongoing (Norwalk)

PLEASE NOTE: This is a *partial* listing of all groups. For more information about groups in your area, please contact the Cancer Care office nearest you, the Cancer Care National Office at 212-302-2400, or The Cancer Care Counseling Line at 1-800-813-HOPE (1-800-813-4673).

The next bouquet you send can help Cancer Care, Inc. touch someone's life.



Just call 1-800-OUR-GIFT, and 20% of the purchase price of your order will be donated to Cancer Care, Inc., an organization providing free professional services for people with cancer and their families. It's that simple. So call 1-800-OUR-GIFT and choose from our selection of:

- Fresh flowers
- Centerpieces
- Seasonal plants – plus –
- Gourmet food or fruit baskets



Remember to mention Cancer Care, Inc. when you place your order.